

EDF Annual Report

Year 2014



**EDF**

The Education for Development Foundation  
มูลนิธิกองทุนการศึกษาเพื่อการพัฒนา



Educated People  
have the potential to truly change  
their lives for the Better

## Executive Summary



In FY 2014 (April 1st, 2014 – March 31st, 2015), EDF's total revenue for supporting the scholarship programs and development projects was at the amount of 91,258,321.72 baht, indicating a 3.42% increase compared to that in the FY 2013. This involves breaking down into 66,022,672.92 baht for domestic revenue (2.77% increase from FY 2013), and 25,235,648.80 baht for international revenue (5.15% increase from FY 2013).

With 27 years of our experiences in education development for the underprivileged children and having strong networks of schools, teachers, education personnel and volunteers working in every targeted area remains the Foundation's main strength.

The accountability and transparency of EDF's work operation have also contributed to consolidating trust among individuals and corporate donors shown by their continuing support to our scholarship programs and project activities.

In FY 2014, EDF's major sponsors comprise; The Embassy of the United States, Bangkok, 4.9 million baht; Shinnyo-en Thailand Foundation, 3.18 million baht; American Women's Club of Thailand, 2.97 million baht; Barclays Capital Securities (Thailand) Ltd, 2 million baht; UBS Securities (Thailand) Ltd., 2 million baht; Siam Yamato Steel Co., Ltd., 1 million baht; and Sino-Pacific Trading (Thailand) Co., Ltd., 1 million baht.

Furthermore, EDF also won "A Model of Thai Moral Award 2014" awarded by Association of the Disabled



of Thailand in memorable of HRH Princess Srinagarindra (HRH the Princess Mother) on Social Welfare Day 2014. This award is honored to an organisation that practices as good role model for the public and Thai society.

For 27 years of scholarship operation in Thailand, EDF has provided 333,276 scholarships, valued at a total of 530,409,799 baht for under-privileged and needy children covering 51 provinces in Thailand.

**Sunphet Nilrat**

Managing Director

The Education for Development Foundation (EDF)

# Resource Mobilization Achievement Fiscal Year 2014

Resource mobilization is the Foundation's priority. In the FY2014, EDF had the annual revenue of 91,258,321.72 baht in total. This is accounted for 3.42% increase from that in FY2013, dividing into 48,667,619.32 baht from scholarship revenue (2.29% increase from that in FY2013), 41,979,913.64 baht from development project revenue (7.55% increase from that in FY2013) and 610,788.76 baht from other income. The proportion of domestic revenue is 72.85% (66,022,672.92 baht) of the total annual revenue in the FY2014.



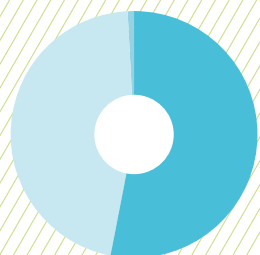
In FY2014, EDF would like to thank sponsors and supporters especially those civil organisations, governmental organisations and corporate sectors for their kind cooperation and benevolence in organizing a variety of special events and campaigns to help EDF in the public relations and fundraising. Featured special events and activities in this year includes.

- TOMS: One for One: Every purchase of one pair of TOMS shoes, TOMS will give away another pair of shoes to a child in need under Matched Giving Program
- Hotel Charity Run 2014: A Charity Mini Marathon, organised by 13 leading hotels in Thailand under Starwood Hotels & Resorts and its affiliates
- JAL Mileage Bank Charity Golf: organised by Japan Airlines
- Bangrajan Samakkee: organised by Channel 3 TV and Broadcast Thai Television Co.,Ltd. under Bangrajan TV series
- Social Expo "Khon Thai Ko Mue Noi Event Year 2: Our Hands for Better Thailand": organised by Khon Thai Foundation in cooperation with Thai Health Promotion Foundation
- 31 Baht or More Can Make a Difference: organised by Baskin Robbins
- Mid-Year Wow! Sale and Super Star Charity Auction: organised by Terminal 21 Department Store
- Hand-in-Hand We Can Help 2014: organised by TCC Land Company Limited
- Valentine's Day Charity Concert in Japan: hosted by MS&AD Insurance Group Holdings Inc.
- The inspiring hand-made notebook activity: sponsored the cost-free exhibition space by the 42nd Bangkok's National Book Fair 2014
- Special donation and donation box placement: supported by MUJI Retail (Thailand) Co., Ltd.;
- Donation box and leaflet placements in 160 branches of Cafe Amazon located in PTT gas stations in Bangkok and neighboring provinces
- Donation box and leaflet placements in 91 branches of Inthanin Coffee shop located in Bangchak gas stations in Bangkok and neighboring provinces



# Key Statistical Data Fiscal Year 2014

Chart 1: Comparison of total revenue between Fiscal Year 2013 and 2014



## Fiscal year 2014

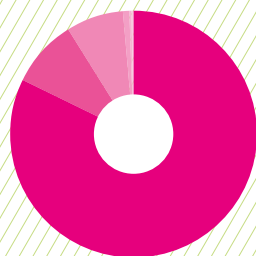
Scholarship	48,667,619.32	Baht
Development Project	41,979,913.64	Baht
Other income	610,788.76	Baht
<b>Total</b>	<b>91,258,321.72</b>	<b>Baht</b>

## Fiscal year 2013

Scholarship	47,579,272.85	Baht
Development Project	39,031,671.07	Baht
Other income	1,631,980.94	Baht
<b>Total</b>	<b>88,242,924.86</b>	<b>Baht</b>

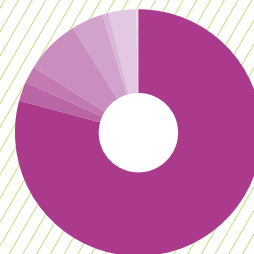


Chart 2: Number of Scholarships categorised by educational level of beneficiaries, Academic Year 2014



Lower Secondary	9,891	Scholarships
Upper Secondary / Vocational Education	1,066	Scholarships
Elementary	907	Scholarships
Higher Education	90	Scholarships
Pre-elementary	46	Scholarships
others	3	Scholarships
<b>Total</b>	<b>12,003</b>	<b>Scholarships</b>

Chart 3: Number of scholarships categorised by scholarship program, Academic Year 2014



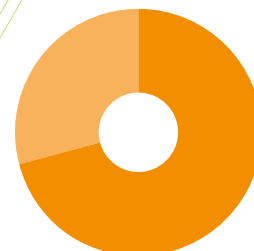
Lower Secondary Program	9,522	Scholarships
Upper Secondary and Vocational Program	309	Scholarships
Disabled Student Program	239	Scholarships
Orphan Students in the three southernmost provinces Program	892	Scholarships
AWC Program for female students	498	Scholarships
Shinnyo-en Foundation Scholarship Program	77	Scholarships
Students in Fisher's Family Program	460	Scholarships
Other Programs	6	Scholarships
<b>SJU</b>	<b>12,003</b>	<b>Scholarships</b>

Chart 4: Source of Scholarship Revenue, Academic Year 2014



## Domestic

Individual	1,691	Donors	4,426	Scholarships
Organisation /Corporation	138	Donors	3,489	Scholarships
<b>Total</b>	<b>1,829</b>	<b>Donors</b>	<b>7,915</b>	<b>Scholarships</b>



## International

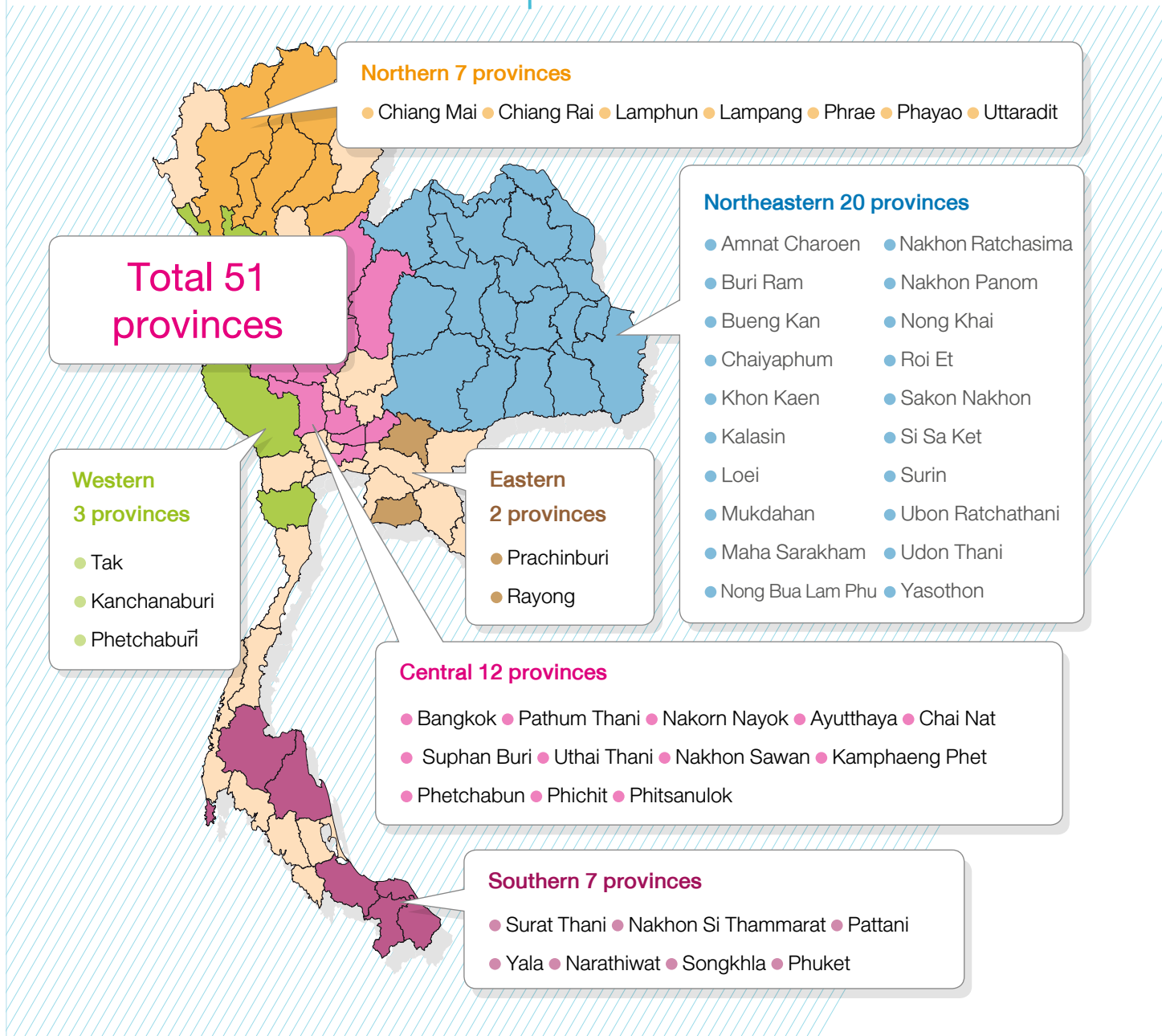
Individual	1,839	Donors	2,902	Scholarships
Organisation /Corporation	247	Donors	1,186	Scholarships
<b>Total</b>	<b>2,086</b>	<b>Donors</b>	<b>4,088</b>	<b>Scholarships</b>

Chart 5: Project Funding Support categorised by type of project and number of beneficiaries, Fiscal Year 2014



Type of Project	Supported funds (baht)	Beneficiary schools	Beneficiary students
● Health Promotion	4,747,096	149	34,800
● Agriculture and Career Development	1,484,400	42	12,900
● Education and Student Capacity Improvement	18,560,440.99	189	29,588
● Study Trip	1,123,654.75	10	5,770
● Present Set Project	711,206.44	74	346
● International Cooperation and Development	15,353,115.46	N/A	5,904
<b>Total</b>	<b>41,979,913.64</b>	<b>464</b>	<b>89,308</b>

## EDF's Operation Areas in Thailand





# Education for Development in Thailand

## Scholarship Program

EDF scholarship program aims to promote the access to education for underprivileged children in Thailand so that they can have assurance for the better future and gain knowledge to be self-reliant and escape from the vicious cycle of poverty. At present, EDF scholarship provision is covering all level of educational support for less fortunate children from pre elementary until higher education. Besides, there are special scholarship program for students with disabilities and the “Under the Same Sky” scholarship program that aims to support orphaned students who lost their parents due to the unrest in the 3 southernmost provinces of Thailand.

Since 1988, EDF have provided 333,276 scholarships to underprivileged children in Thailand, totaling 530,409,799 baht. In 2014, EDF handed 12,003 scholarships to the students in need at different education levels, totaling 29,800,799 baht.

## Development Project

Further to scholarship programs, EDF has initiated educational development projects that aim to promote appropriate environment for the students in rural schools. With school-based development model, schools are the development center while students are the inter-mediators who then expand the project activities throughout their families and communities. As its heart, every project focuses on sustainable development, community participation and capacity building. Featured EDF’s development projects are shown as follows:

### Education Development and Student Capacity Improvement

Aims to improve teaching and learning environment both in and out of the classroom to empower the students to learn and reach their full potential with better quality of lives which includes school facility improvement such as construction and renovation of library and restrooms, computer donation and training, and bicycle lending program.

Education development and student capacity improvement project in the FY2014 comprises; MPID Integrated Development Project, Education Technology Support (ETS), Regional Professional Development Workshop for Primary Level Teachers of English and English Access Microscholarship Program, “Bike for Kids” project supported by Sino-Pacific Trading (Thailand) Co.,Ltd. , Thai Cyber Kids project, Internet Friendship Project, and etc.

### Agriculture and Career Development

Aims to support agricultural and career skill development projects in rural needy schools to promote the agricultural and necessary career skills for their better future career option. Moreover, the project’s by-products can be used to support school lunch program, and generating income for participating students.

Agriculture and career development project in the FY2014 includes Barter-Between-Brother Project (BBB) and One School One Project (OSOP).



### Health Promotion Program

Aims to promote health care and sanitation in rural schools so that students will be healthy either physically and mentally which will allow them to learn things wisely. Furthermore, participating students are expected to help promote knowledge of appropriate health care and sanitation to their families and communities.

One of the featured health promotion project in FY2014 was “TOMS: One for One” project, to give more than 30,000 pairs of TOMS shoes to less fortunate students

in Surin Province. The training on sanitation education, tips on foot care, illnesses caused by walking on bare foot also offered to all participating students.

### Study Trips

To promote informal learning experiences for both Thai and foreign university and school students through the visit to EDF operation areas and learn how EDF works to improve quality of lives of less fortunate children and people. Participating students will have chance to join

the cultural exchange activities, as well as to explore the way of life of rural Thai communities and home stay with local people.

In the FY2014, participants from three universities came to Thailand to attend the study trips with EDF, including those from Wakayama University, Ritsumeikan Asia Pacific University (APU), and Washington University. Moreover, EDF also organised a special Japanese sport event and recreation or “Undokai” in a school in Udon Thani Province.

## Remarkable Projects Fiscal Year 2014



### MPID Integrated Development project

To improve quality of life and education for under-privileged students among fisher's communities in the three districts of Songkhla Province; Muang Songkhla, Sating Phra and Singhanakhon by using school-based development model, promoting community participation and building stakeholder engagement such as cooperation from schools, communities' members, public sectors and private sectors within the areas.

The program aims to encourage cooperation and creative thinking among local people to develop their local wisdom and improve their quality of life in accordance with the traditional way of living and sustainable development paradigm so that the youths in the areas will have access to good quality of education and have opportunity to develop their capacity and career skill through both curricular and extracurricular activities such as the development of teaching media, school facility improvement, the preservation of traditional Manorah dancing, the support of local handicraft production, the agricultural activities for school lunch project and other projects initiated and proposed by the consensus between schools and communities.

### English Access Microscholarship Program

The program was initiated by cooperation between EDF and the Embassy of the United States in Bangkok, to promote English learning and capacity improvement for less fortunate students through the extracurricular activities such as English Study Trip and English Camp to allow participating students to learn not only English language but also learn about American culture, personality improvement and self-confidence so that they can apply the English language skill confidently in their daily lives. In the FY 2014, there were 84 students in Chiang Mai province participated in the program for the first year.



### Thai Cyber Kids

In response to the lack of computer equipment and Internet connectivity for the purpose of teaching and learning in rural schools, Alcatel-Lucent (Thailand) in cooperation with EDF provided funding and computer equipment to three schools in Ayutthaya Province under a project titled “Thai Cyber Kids”. The training sessions in e-learning, e-commerce, video and digital media production also offered for the teachers and students. The project aims to give less fortunate children with access to the technology that benefit their learning and teaching. It also helped improve computer skill for less fortunate kids to prepare themselves for the coming era of digital economy.



## EDF's Board of Directors



Col. Somkid Sreesangkom

Chairman



Mr. Terumasa Akio

Vice Chairman



Mr. Udorn Tantisoonthorn

Director



Dr. Panom Pongpaibool

Director



Dr. Thongchai Chewprecha

Director



Mr. Chatchai Yenbamroong

Director



Mr. Sakda Sreesangkom

Director



Ms. Nartrudee Nakornvacha

Director, Secretary and Treasurer



Mr. Sunphet Nilrat

Managing Director

# Key Sponsors and Supporters Fiscal Year 2014

- American Women’s Club of Thailand
- UBS Securities (Thailand) Ltd.
- Barclays Capital Securities (Thailand) Limited
- Unicity Make Life Better
- SHINNYO-EN (THAILAND) FOUNDATION
- U.S. Embassy Bangkok
- Sino Pacific Trading (Thailand) Co., Ltd.
- Siam Yamato Steel Co., Ltd.
- Mr. Albert Lordan
- Starwood Hotels & Resort
- The Mattel Children’s Foundation.
- MUJI Retail (Thailand) Co., Ltd.
- GREEN CLUB
- TCC Land Co., Ltd.
- PTT Public Company Limited



