



**EDF**

The Education for Development Foundation  
มูลนิธิเพื่อการพัฒนาเด็ก

# EDF Annual Report Fiscal Year 2013



## EDF Pride: Golden Kalapapruek Award

In late 2012, EDF was awarded with “NGO of the Year”, in the large NGO category, at “Thailand NGO Awards 2012”. This award recognized EDF’s best practices in Resource Mobilization, Accountability, Transparency and Sustainability.

Nevertheless, by 2013, EDF received another award known as the “**The Golden Kalapapruek Award**”, the award ceremony was held in December 2013. This marked another pride for all of us. This prestigious award was given to us by Khon Kaen University in recognition of our 26 years of continuous development work for the society both through our scholarship program and educational development projects.



# Resource Mobilization Achievement, Fiscal Year 2013

Resource mobilization is one of the most important activities that EDF emphasizes on. In Fiscal Year 2013, EDF was able to raise 88,242,924.86 THB; a 18 percent increased from FY2012; 47,579,272.85 THB for scholarship fund (20 percent increases from FY2012), 39,031,671.07 THB for development project (10 percent increase from FY2012) and another 1,631,980.94 THB for other income.

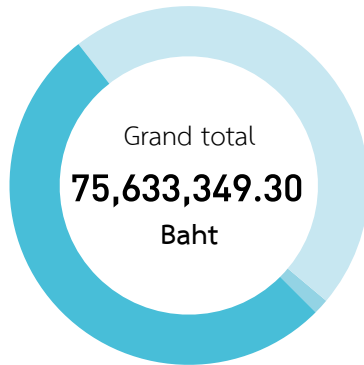
From the total revenue of 88,242,924.86 THB in Fiscal Year 2013; 64,244,338.60 THB was raised domestically by EDF-Thailand; equivalent to 72.80% of the total FY2013 revenue.

In addition to our existing donors who have been long time contributing to our scholarship programs and various development projects, our reliability has been recognized and entrusted by a vast number of new donors whether they are individuals or corporates of all sizes. Some of our new donors include TMB Foundation, Alcatel-Lucent (Thailand), The Red Bull Beverage, Scenario, HSBC, PepsiCo Services Asia and Japan Airlines.



Table 1:  
Comparison of the total revenue between Fiscal Year 2012-2013

### Fiscal Year 2012



<span style="color: #ADD8E6;">■</span> Scholarship	<b>39,117,660</b>	baht
<span style="color: #00B0F0;">■</span> Development Project	<b>35,629,153.35</b>	baht
<span style="color: #4682B4;">■</span> Other income	<b>886,535.95</b>	baht

### Fiscal Year 2013



<span style="color: #7CFC00;">■</span> Scholarship	<b>47,579,272.85</b>	baht
<span style="color: #9ACD32;">■</span> Development Project	<b>39,031,671.07</b>	baht
<span style="color: #8FBC8F;">■</span> Other income	<b>1,631,980.94</b>	baht

Table 2:  
Number of Scholarships Academic Year 2013  
Categorized by Type of Scholarship

<span style="color: #DC143C;">■</span> Lower Secondary Program	<b>11,333</b>	Scholarship
<span style="color: #C71585;">■</span> Upper Secondary and Vocational Program	<b>582</b>	Scholarship
<span style="color: #DDA0DD;">■</span> Disabled Students Program	<b>148</b>	Scholarship
<span style="color: #E67E8A;">■</span> Upper Secondary Program (AWC)	<b>519</b>	Scholarship
<span style="color: #F080F0;">■</span> Orphaned Students in the three southernmost provinces	<b>819</b>	Scholarship
<span style="color: #F080F0;">■</span> Disadvantaged Students in Fisherman Family	<b>460</b>	Scholarship

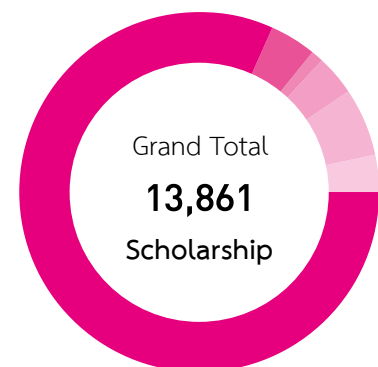


Table 3:

## Domestic Revenue Fiscal Year 2013 Categorized by Source of Funding



Table 4:

## Project Funding Support Fiscal Year 2013 Categorized by Type of Projects and Number of Beneficiary Schools



Project Type	Funding (Baht)	Number of Schools
Health Promotion	8,585,910	103
Agriculture and Career Development	3,715,067	40
Education and Student Capacity Improvement	14,396,313.21	141
Study Trip	679,785.38	5
International Cooperation and Development	11,654,595.48	
<b>Grand Total</b>	<b>39,031,671.07</b>	<b>289</b>

# EDF's Target Areas in Thailand

## North Eastern

Projects	Provinces
Scholarship Program: Lower & Upper secondary and vocational level	All 20 provinces
Scholarship Program: University level	Roi Et
Health Promotion Program: Great fruits, good veggies	Buri Ram, Surin, Ubon Ratchathani, Yasothon, Loei, Udon Thani, Sakon Nakhon
Agriculture and Career Development Program	Buri Ram, Maha Sarakham, Sakon Nakhon, Ubon Ratchathani , Khon Kaen, Kalasin, Roi Et, Surin, Yasothon
Education and Student Capacity Improvement Program: School Facility Improvement (Restroom Building)	Ubon Ratchathani, Maha Sarakham, Buri Ram
Education and Student Capacity Improvement Program: Bicycle Borrowing Program	Nong Bua Lam Phu, Bueng Kan
Education and Student Capacity Improvement Program: ICT Development	Sakon Nakhon, Mukdahan, Nakhon Phanom
Study Trips and Internship Program at Princess Chulabhorn's College	Udon Thani, Mukdahan
Emergency Relief Program	Ban Dong Lob School, Nakhon Ratchasima

Amnat Charoen, Buri Ram Chaiyaphum, Khon Kaen, Kalasin, Loei, Mukdahan Maha Sarakham, Nong Bua Lam Phu, Nong Khai, Bueng Kan, Nakhon Ratchasima, Nakhon Phanom, Roi Et, Si Sa Ket, Sakon Nakhon, Surin, Ubon Ratchathani, Udon Thani, Yasothon

## Northern

Projects	Provinces
Scholarship Program: Lower & Upper secondary and vocational level	All 7 Provinces
Scholarship Program: University level	Chiang Mai, Chiang Rai, Phayao
Education and Student Capacity Improvement Program: English camp	Chiang Mai
Internship Program at Princess Chulabhorn's College	Chiang Rai

Chiang Mai, Chiang Rai, Phayao, Lamphun, Phrae, Uttaradit, Lampang

## Central

Projects	Provinces
Scholarship Program: Lower & Upper secondary and vocational level	All 10 Provinces
Scholarship Program: University level	Bangkok, Pathum Thani
Education and Student Capacity Improvement Program: Bicycle Borrowing Program and ICT Development	Ayutthaya

Bangkok, Pathum Thani, Ayutthaya, Chai Nat, Suphan Buri, Nakhon Sawan, Kamphaeng Phet, Phetchabun, Phichit, Uthai Thani

## Western

Projects	Provinces
Scholarship Program: Upper secondary	All 3 Provinces
Internship Program at Princess Chulabhorn's College	Phetchaburi

Tak, Kanchanaburi, Phetchaburi

## Eastern

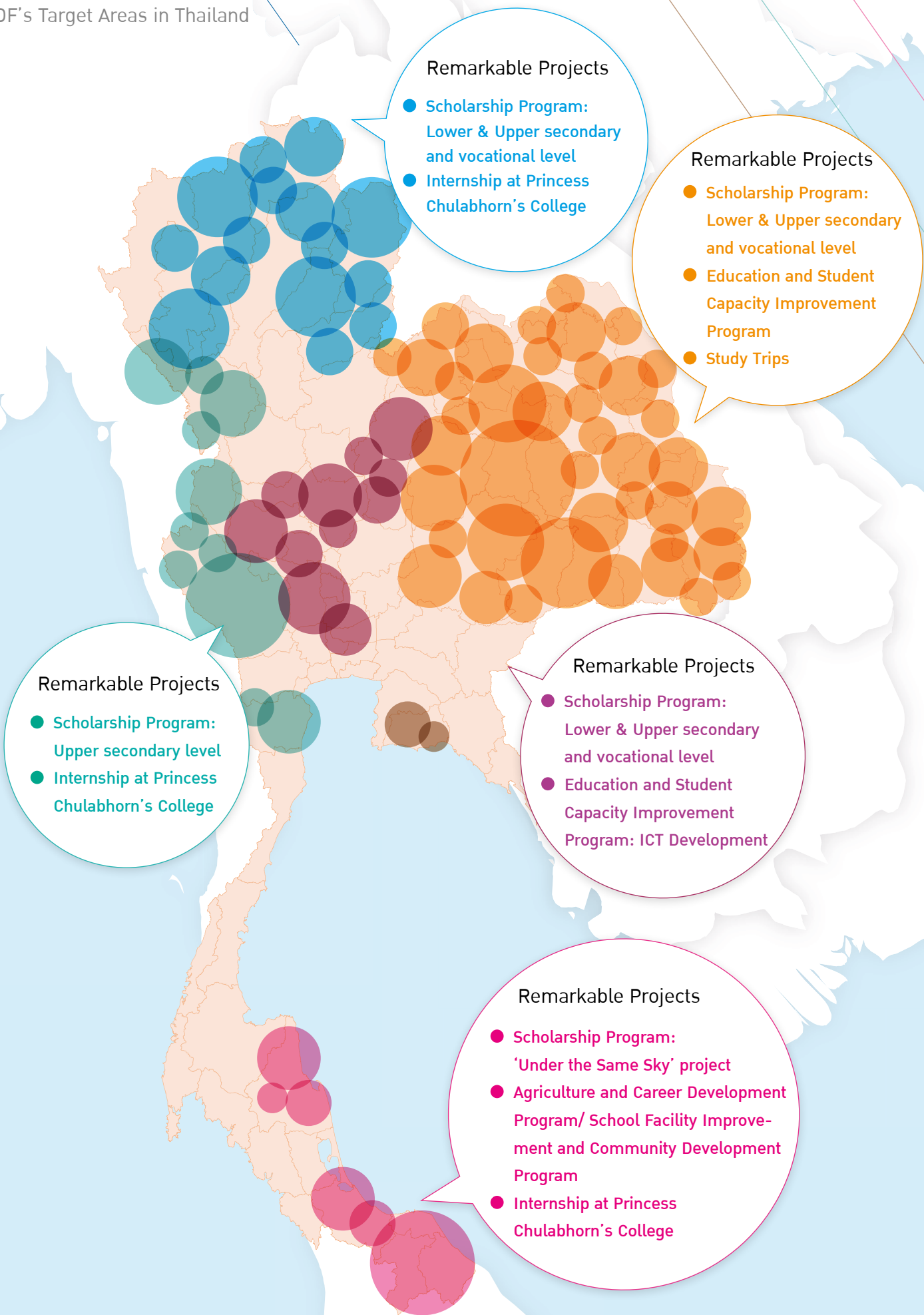
Projects	Provinces
Volunteering Trip Program	Rayong

Rayong

## Southern

Projects	Provinces
Scholarship Program: 'Under the Same Sky' project for orphaned students in 3 violence-affected southernmost provinces	Pattani, Yala, Narathiwat
Scholarship Program: Upper secondary	Nakhon Si Thammarat
Agriculture and Career Development Program/ School Facility Improvement and Community Development Program	Songkhla
Internship Program at Princess Chulabhorn's College	Nakhon Si Thammarat

Nakhon Si Thammarat, Songkhla, Pattani, Yala, Narathiwat





## Northern 7 provinces

Chiang Mai, Chiang Rai, Phayao, Lamphun, Phrae, Uttaradit, Lampang

## North Eastern 20 provinces

Amnat Charoen, Buri Ram Chaiyaphum, Khon Kaen, Kalasin, Loei,  
Mukdahan, Maha Sarakham, Nong Bua Lam Phu, Nong Khai,  
Bueng Kan, Nakhon Ratchasima, Nakhon Phanom, Roi Et, Si Sa Ket,  
Sakon Nakhon, Surin, Ubon Ratchathani, Udon Thani, Yasothon

## Central 10 provinces

Bangkok, Pathum Thani, Ayutthaya, Chai Nat, Suphan Buri,  
Nakhon Sawan, Kamphaeng Phet, Phetchabun, Phichit, Uthai Thani

## Southern 5 provinces

Nakhon Si Thammarat, Songkhla, Pattani, Yala, Narathiwat

## Western 3 provinces

Tak, Kanchanaburi, Phetchaburi

## Eastern 1 province

Rayong

# Total 46 provinces

# Education for Development, Fiscal Year 2013

Fiscal Year 2013, EDF continues to provide educational opportunities to various groups of underprivileged children through different type of scholarship programs. Together with scholarship support, EDF also expands our educational development projects to develop the schools and surrounded communities.

Our programs aim to equip the students with the chance to learn and develop their skills beyond the school curriculum that will benefit their employment options in the future. Furthermore, EDF also provides various capacity development trainings which include knowledge and project management for teachers and students engaged in each project. This is to ensure the effectiveness and sustainability in the implementation of each project; to empower the school to become a strong foundation of development and a learning center for the community.

In addition, EDF establishes our partnership with government and private sector at national and global level to ensure sustainability of educational development project for Thai students. EDF has been recognized for our accountability and transparency either at domestic and international level. For example, we have partnered with many universities in Thailand and abroad such as Khon Kaen University in Thailand, Ritsumeikan Asia Pacific University, Wakayama University, Hosei University and Nihon University (College of Law).

## Scholarship Programs

EDF scholarship program is available for less fortunate students at different levels such as, secondary schools, vocational schools, university, disabled students, and orphaned students in 3 southernmost provinces of Thailand.

## Key Achievement Fiscal Year 2013

1. Expansion of the scholarship provision to new target areas covering total 46 provinces in Thailand.

2. Build and maintain strong and effective network for scholarship provision in every target area.

3. Successfully provide scholarship to help more than 2,000 orphaned students who lost their parents from the unrest in 3 southernmost provinces since 2006, under “Under the Same Sky” scholarship program with over 10 million Baht scholarship value.

4. Expansion of the scholarship provision for students at university level, total 27 scholarship in 2013.



# EDF Developmental Projects

EDF has put sustainable development, community participation and capacity building at the heart of our developmental projects. Our signature projects are listed below:



## Study Trips:

To promote non-formal learning experiences for both Thai or foreign people by visiting EDF operation sites which allow them to enjoy exploring new experiences and learning way of life of rural Thai communities as well as cultural exchange.



## Agriculture and Career Development:

To support schools' lunch projects and promote students' consumption of fresh, nutritious and hygienic food. Also, the student can develop agricultural skills that benefit to their future careers. In addition, the project helps strengthen the self-reliance and sustainability capacity of schools and communities.



## Education Development and Student Capacity Improvement:

To improve teaching and learning environment for schools in remote areas which includes construction of library and restroom, bicycle borrowing program, and ICT development. Seminars and workshops are also arranged to allow students and teachers to gain full benefit from project.



## Health Promotion Program:

To encourage children to be physically, psychologically, intellectually strong and healthy which gives them the potential to learn things wisely.



## Volunteering Trips

To promote a volunteering spirit, altruism and values of sharing to interested caring people through the engagement in hands-on activities at the schools and communities in remote areas.



## Emergency Relief Program:

Set up an Emergency Relief Fund to provide emergency relief support to disasters victims regardless of differences in races, religions or nationalities

# Remarkable Project Achievement, Fiscal Year 2013

**Great Fruits, Good Veggies**  
(Tae Gin Pak, Narak Gin Polamai):  
Promoting children's and youth's consumption of fruits and vegetables for healthy diets

With the support of Thai Health Promotion Foundation's mission and framework to enhance food security and safety in schools, EDF was sponsored the sum of 8,585,910 Baht to implement Great Fruits, Good Veggies Project that is piloting in 88 schools in Northeastern Thailand.

The overall purpose of this project is to promote healthy diets through nutrition education and change the food environment which focus more on increasing children's and youth's consumption of fruits and vegetables to at least 400 grams per day as recommended by WHO. The expected outcome is to cultivate nutritional value and healthy behavior among the participants for better health and well-being. Inadequate consumption of fruits and vegetables was among the risk factors recognized as contributing worldwide, in particular Thailand, non-communicable diseases (NCDs) burden.

**Thai Cyber Kids:**  
Providing access to Information Technology (IT) for youth in remote area

IT plays a crucial role in today's education development serving as learning and educational tool. IT access directly benefits children and broadens their learning experience. However, rural schools in Thailand face difficulties in the access to IT facilities, such as computers, and fail to acquire appropriate internet connection for education purposes.

Thus, Alcatel-Lucent (Thailand) has sponsored 1,044,781.60 Baht in FY2013 to launch "Thai Cyber Kids" project at 3 rural schools in Ayutthaya province. The program aims to create a platform for children and schools to get them connected to outside world via internet and help students develop their IT skills and experiences, use various computer applications and social networks for their self-development, learning and economic independence. The activities include IT facility improvement and training which enable children to positively apply IT skills in their daily lives.

**Integrated Development Project**  
for children, schools and communities

Applying school-based development approach, the project is the joint school-community development. It encourages schools and surrounding community members to work together to develop their own schools. What is new in the project is a strategic tool called "Stakeholder Engagement" which involves every stakeholder and beneficiary concerned at all level in the area including schools, community people, government and private sectors in every process of project implementation. It is expected this will inspire everyone in the community to know how to make positive changes to the local area in which they live in.

Under sustainable development framework (social-economic-environment), the project aims to improve the quality of life and education for the underprivileged residing in the area of 3 districts in Songkhla province namely Muang Songkhla, Sathing Phra and Singha Nakorn. Three main activities include

### PEPSICO Helping Hand: Skill development according to Sufficiency Economy

the scholarship provision, school facility improvement and school & community developmental projects. Both school facility improvement and school & community developmental projects encourage the use of local wisdom and local resource in project implementation and allow children to have first-hand experience from studying in-and-out of classroom. The school and community developmental projects are upon the schools' initiatives i.e. agriculture for lunch, handicraft and Manorah traditional dance.

Helping hand is a life-skill development support program for schools located in industrial area of Rayong province; Nikhom Sang Ton Aeng Rayong 5 and Wat Suwanransan School. The project has been implemented by PepsiCo Services Asia Co., Ltd. in cooperation with EDF.

The objective was for students to experience and learn about specific skill that would enhance their career development in the future and increase family income. The project was designed for students to have a hands-on experience in skills that they are interested in. By letting the students and schools decide on the skills that they would like to pursue and encourage students to take part in the decision making.

Moreover, EDF and PepsiCo Services Asia Co., Ltd. provided material, facility and knowledge to support the schools in implementing the project. The Helping Hand is a holistic project that put the students at the center of the development with the hands of support from the community.

### Internship program at Princess Chulabhorn's College: Foreign Students are invited to learn about Non-governmental Organization work and Educa- tion Development in Thailand

EDF and our partners believe that internship is an effective way for students to learn from the professionals outside their classroom. Currently, we are piloting an internship program with Princess Chulabhorn's College. The program brought 4 students from Ritsumeikan Asia Pacific University to participate in an internship program at Princess Chulabhorn's College in 4 provinces include Mukdaharn, Nakhonsithammarat, Chiangrai, and Petchburi.

The program's primary objective is for internship students to be well-equipped with knowledge, the understandings of NGO work and current situation of education development for Thai students. During the 3 weeks of internship, students were appointed to assist teachers and live in homestay accommodation provided by Thai host families for cultural immersion and language learning.



# Key Sponsors and Supporters Fiscal Year 2013

- Advanced Computer Eyes Co., Ltd.
- Albert Loridan (Mr. )
- Alcatel Lucent Co., Ltd.
- American Women's Club of Thailand
- Bangkok Mita-Kai
- Barclays Capital Securities (Thailand) Limited
- The Hongkong and Shanghai Banking Co., Ltd.
- Ohara (Thailand) Co., Ltd.
- PepsiCo Services Asia Co., Ltd.
- The Red Bull Beverage Co., Ltd.
- Seamico Securities Public Co., Ltd.
- Shinnyo-en (Thailand) Foundtion
- Siam Future Property Ltd.
- Superior Foundation
- Thai Bridgestone Co., Ltd.
- Thai Health Promotion Foundation
- Thai ORIX Leasing Co., Ltd.
- Thai Paper Co., Ltd.
- Thai Value Investor Association
- Thai Yamaha Motor Co., Ltd.
- TMB Foundation
- Tokyo Development Consultants (Thailand) Co., Ltd.
- TRD Asia Co., Ltd.
- UBS Securities (Thailand) Ltd.

